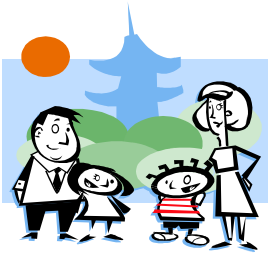


## 2011 Holidays

Pamm's House will be closed on the holidays listed below. Payment is required for holidays.



Friday, December 31, 2010  
Monday, January 17  
Monday February 21  
Friday, April 22  
Monday, May 30  
Monday, July 4  
Monday, September 5  
Monday, October 10  
Friday, November 11  
Thurs & Fri, Nov. 24 & 25  
Fri & Mon, December 23 & 26  
Monday, January 2, 2012

New Year's Eve  
Martin Luther King, Jr. Day  
President's Day  
Good Friday  
Memorial Day  
Independence Day  
Labor Day  
Columbus Day  
Veteran's Day  
Thanksgiving & Day After  
Christmas (Observed)  
New Year's Day (Observed)

Other closures may occur due to unfortunate events such as (but not limited to) power failure, severe weather, death of a family member or other events out of the provider's control. Childcare fees do not change due to these uncontrollable conditions. Parents are responsible for having a backup provider or backup plan before it is needed in the event of your child's illness or Pamm's House holiday or unplanned closing.

## Daily Schedule

It is important that your child arrives by 9:00 am so the child care experience is enjoyable. Your child will not be accepted into care after 10:00 am. Pick up time is after 2:00 pm. It's helpful to let me know by email, text or phone call if you are going to be earlier or later than normal for drop-offs or pick-ups so I can plan meals and activities accordingly. **A typical, but flexible day:**

7:30-9:00	Children arrive, *free play, morning toys, TV time
9:00-9:30	Morning snack
9:30-9:45	Diapers & potty
9:45-10:30	Learning activities & cooperative play
10:30-11:00	Clean up for lunch, diapers & potty
11:00-11:30	Lunch
11:30-2:00	Nap & rest time
2:00-2:45	Diapers & potty
2:45-3:15	Snack time
3:15-5:30	*Free Play, TV time, children ready to go home



\*Children learn a lot from having time to play on their own. Watch your email for photos of your child doing all sorts of playing and learning at the same time.